

Total Window Makeover 2026

An Introduction to the Complete System of Historic Window Restoration

Course Objective

The **Total Window Makeover** is a five-day, hands-on introduction to the complete system required to restore historic wood windows properly.

Rather than treating windows as isolated parts, this course teaches participants how to think in terms of **three essential makeovers**:

- The **Mechanical Makeover**
- The **Sash Makeover**
- The **Frame Makeover**

These three makeovers represent the minimum set of responsibilities required to bring a historic window back into service.

Underlying them — and holding them together — is the deeper structure of **the Five Pillars of Window Craft**, which governs how the work is ultimately sequenced, scaled, and repeated in the field.



The Three Makeovers (Primary Understanding)

For someone new to Window Craft, every historic window can be understood through three lenses:

1. Mechanical Makeover

Restoring function. This includes:

- Understanding how the window operates
- Replacing or repairing ropes, weights, and hardware
- Removing and reinstalling sash
- Returning the window to basic working order

Without the mechanical makeover, no other work is possible.



2. Sash Makeover

Restoring the working components that hold the glass.

This includes:

- Paint removal
- Wood repair
- Glass removal and reinstallation
- Glazing and finishing

The sash is the heart of the window.

Most historic windows fail here first.



3. Frame Makeover

Restoring the structure that holds everything together.

This includes:

- Basic frame repair
- Surface preparation
- Priming and finishing
- Managing wear, water, and exposure

A sash cannot perform well inside a failing frame.



The Five Pillars (Underlying Structure)

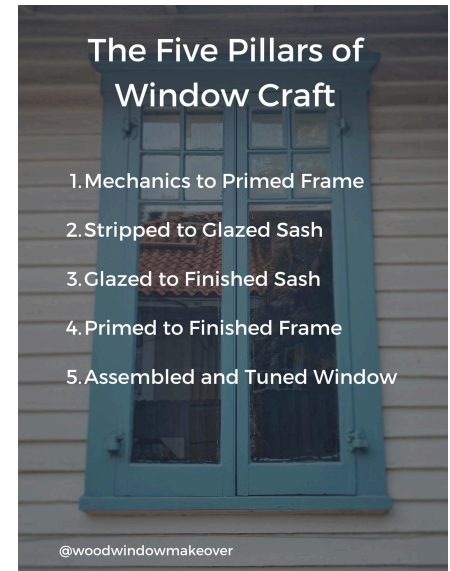
Beneath the three makeovers lies the deeper logic of **the Five Pillars of Window Craft**:

1. Mechanics to Primed Frame (M2P)
2. Stripped to Glazed Sash (S2G)
3. Glazed to Finished Sash (G2F)
4. Primed to Finished Frame (P2F)
5. Assembled and Tuned Frame (A&T)

These pillars describe the **ideal order of operations** in full production work.

However, in a five-day introductory course, the pillars are **introduced, split, and revisited** — not completed in a perfectly linear fashion.

Understanding *why* this happens is part of the education.



Why the Week Is Sequenced the Way It Is

Historic window restoration is governed by **material realities**, not classroom preferences.

One of the most significant constraints is **glazing putty cure time**.

- Glazing must be completed early in the week
- Putty requires multiple days to set before painting
- If glazing is delayed, the course cannot be completed properly

Because of this, the week is intentionally sequenced to balance **mechanics, sash work, and frame work** in a way that allows participants to experience *every critical operation* within five days.

Five-Day Course Flow (Teaching Sequence)

Day 1 — Mechanical Makeover (Part 1)

- Understanding window function
- Removing sash from the opening
- Replacing ropes and addressing basic mechanics
- Preparing the window so other work can proceed

This work opens access to the sash and frame but does not yet complete full M2P.



Day 2 — Sash Makeover (Strip to Glaze)

- Paint removal
- Glass removal
- Wood repair
- Reglazing

All sash are glazed by Tuesday so putty can cure over Wednesday and Thursday.



Day 3 — Mechanical Makeover (Part 2) + Frame Work

- Completing remaining mechanical tasks
- Continuing frame preparation and repair
- Introducing frame priming concepts

At this point, M2P has been *experienced in full*, though spread across days.



Day 4 — Frame Makeover + Finish Preparation

- Primed to Finished Frame (P2F)
- Beginning Glazed to Finished Sash (G2F)
- Hardware preparation

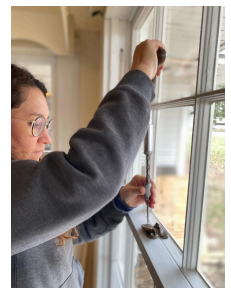
This day bridges structure and finish.



Day 5 — Finishing, Assembly, and Tuning

- Final sash painting
- Assembled and Tuned Frame (A&T)
- Reinstalling sash
- Final tuning and hardware adjustment

The window is returned to service.



What This Course Is — and Is Not

This course **is**:

- A complete introduction to authentic window restoration
- A systems-oriented overview of how the work fits together
- A foundation for further skill development and leadership

This course is **not**:

- A mastery course
- A shortcut
- A substitute for real field repetition

It shows participants *what the whole work is*, and why each part matters.

Who This Course Is For

- Tradespeople entering historic window work
- Preservation-minded builders and carpenters
- Homeowners seeking real understanding
- Individuals exploring Window Craft as a long-term path
- Future Outpost leaders in the making

Everyone is welcome.

Those with leadership capacity will recognize the weight of the responsibility.



Relationship to Outposts

The Total Window Makeover is taught within **Window Craft Outposts**, where real tools, real systems, and real constraints exist.

This allows participants to see:

- Why sequencing matters
- Why systems exist
- Why leadership is required

The course prepares participants not just to *do* the work — but to understand how the work is organized.

Final Word

Historic window restoration is not complicated — but it is ordered.

This course exists to introduce people to that order, so they can continue the work with clarity, humility, and competence.